

Important Notice

To customers who have purchased
"Kumon Magnetic Number Board 100" or
"Kumon Magnetic Hiragana Board"

– Please inspect the pieces included with your product –

Thank you for your continued patronage of our products.

We have recently discovered that, in rare cases, some "Kumon Magnetic Number Board 100" products manufactured and sold by our company may contain pieces in which the body and lid are not properly welded together, potentially allowing the built-in magnets to come loose.

At this time, there have been no confirmed cases of accidents such as the ingestion of magnets due to this issue. However, to ensure the highest level of safety, we ask that all customers who own the **"Magnetic Number Board 100"** or the **"Magnetic Hiragana Board," which is manufactured using the same method**, inspect their products.

While we have not yet confirmed any similar cases with the "Magnetic Hiragana Board," we also ask that you check your products.

(Note: Products in the same series, namely "Magnetic Kanji Board" and "Magnetic Number Board 30," are manufactured using different methods and are not affected by this issue and can be used as usual.)

Therefore, we kindly ask you to check your product using the steps below.

If, upon inspection, you find any pieces whose body or lid is detached or easily detached, discontinue use immediately and contact us at the form below. We will replace the product free of charge.

In response to this issue, we will continue to strengthen our quality control system to prevent recurrence.

Affected Products and Manufacturing Lot Numbers

1. Magnetic Number Board 100

Affected Manufacturing Lots: 0D03, 0I04, 1D05, 2J06, 3B01, 4D02, 5I03

Manufacturing Period: April 2020 - August 2025

2. Magnetic Hiragana Board

Affected Manufacturing Lots: 0D03, 1D04, 1J05, 2D06, 2J07, 3B01, 3J02, 4L03, 5I04

Production period: April 2020 - August 2025

[How to check the manufacturing lot number]

Please check the stamp on the back of the package or the print on the drawstring bag used to store the pieces.



package



Drawstring bag for storing spinning tops

■ Inspection Request (How to Identify Malfunctions)

Normal Piece:

The "body" and "lid" are securely attached and will not separate under normal use.

Faulty Piece:

The "body" and "lid" are not securely attached and will separate with just a light touch.



View from above

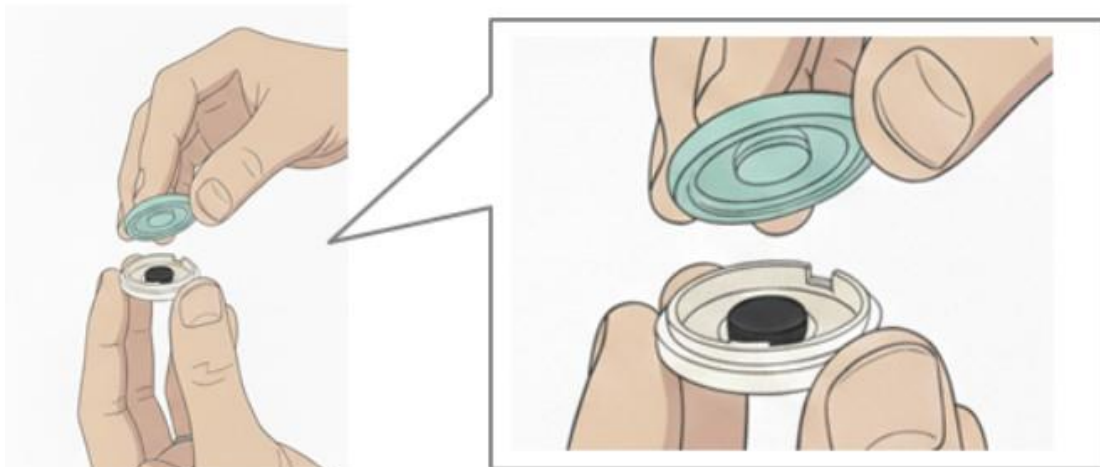


Viewed from side

Inspection method:

Take each piece one by one and check them by lightly pinching or touching them with your fingers.

*When inspecting, do not try to forcefully pry them open. This may result in injury.



■Inquiries/Contact Information

If you find any pieces with a body or lid that is detached or easily detached, please contact us via the form below.

[Kumon Publishing Co., Ltd., Inquiry Form](#)

(24-hour service)

*For a smoother response, please enter **"Regarding Magnetic Board"** in the subject line.

End